

Les Deux Platanes

Region: Cote d'Azur

Sleeps: 14 **Bedrooms:** 7



Overview

A traditional French farmhouse situated in the peaceful countryside of the Massif des Maures. Perfect vacation home for a big family boasting 50 acres of parkland with a private pool. Near to charming village of La Mole. Only 6 miles from the coast – it really is a rarity to find such a combination! Air conditioning. 6 bedrooms in Main House +1 bedroom in Annex. 7 bedrooms/6 en suite bathrooms, to sleep up to 14.

Description

A traditional French farmhouse situated in the peaceful countryside, this is a perfect vacation home for a big family. It boasts 50 acres of parkland with a private pool.

This traditional Mas is in the peaceful countryside surrounded by vineyards, just two kilometres from the village of La Mole. This traditional farmhouse built early in the 19th century has seven bedrooms and amazing grounds which cover over 20 hectares/50 acres of parkland. A 12m x 6 m pool can be found 100 metres from the house.

It is tastefully decorated in traditional features combined with modern amenities to create a perfect place to stay. The elegantly decorated main living room, with large fireplace for cool autumn evenings, opens onto the lower terrace. The old natural flagstone floor of the ground insures constant coolness in the heat of summer. The fully equipped kitchen a separate dining room, has a door which leads directly to the terraces' comfy seating area where you can eat al fresco under the dappled shade of the Plane trees. What better way to enjoy the tranquillity?

The nearby village of La Mole has a small but well-stocked supermarket and an award-winning bakery that sells pies and pizzas. L'Auberge de la Mole, a well-known restaurant often frequented by celebrities, offers remarkable cuisine from the Périgord in a rustic setting. The beauty of this location is the proximity to the glamorous port of St Tropez, which is only a 20-minute drive or to the famous restaurants on Pampelonne beach.

There are plenty of things to do from golf, tennis, horse riding, to visiting the hilltop villages such as Grimaud, Gassin, and Ramatuelle. Something different could be the well-known chartreuse or Carthusian monastery of La Verne, high in the Massif des Maures.

Les Deux Platanes

Region: Cote d'Azur

Sleeps: 14 **Bedrooms:** 7

Layout

Main House (ground floor):

Large living room, open fireplace, French doors to garden

TV room/study, open fireplace, French door to garden

Dining room, French door to terrace with outdoor dining

Kitchen, door to garden

Guest WC

First floor:

Master double bedroom (1.60m) portable air-conditioning unit, ensuite bathroom, WC, French doors to garden

Double bedroom (1.40m) ensuite walk-in shower room, WC, French doors to garden

Double/twin bedroom (1.80m or 2 x 0.90m) ensuite walk-in shower room, French doors to garden

Double bedroom (1.60m) with sofa (can open into a single sofa bed) ensuite bathroom.

Separate WC (shared by bedrooms 3 & 4).

Children's/teenager's bedroom (4 x 0.90m) ensuite bathroom, WC

Double/twin bedroom (1.80m or 2 x 0.90m) ensuite bathroom, WC

TV room

Annex (on request):

Twin bedroom (2 x 0.90m), ensuite bathroom, WC

More Info

Grounds:

Extensive parkland

Outdoor dining terrace and comfortable seating under shade of plane trees

Portable gas barbecue on request

Pool 12m x 6m pool set 100m away from house (Depth 1.30 - 1.90m)

Ample Parking

Included:

- 2 hours daily maid service, Monday - Saturday.

- Portable air-conditioning in 1 bedroom.

- Wi-Fi internet.

- Pool towels.

Extras:

- Telephone.

- Winter heating €200 per week.

- The Annex is included in peak season pricing only: at all other times there is an extra charge.

It is not often one finds a Provencal-style Mas of such standing so close to St Tropez and the coast, and this one is magnificent; superbly decorated, in an excellent private location but still close enough to the razzamatazz of St Tropez and the beaches if you wish to go. La Mole has a prestigious restaurant called L'Auberge de la Mole which has been in the same family for 50 years - it is important to book in advance so as not to be disappointed and remember to take "real" money as they don't take credit cards! La Mole has even got its own little airport with scheduled flights with Darwin airlines from Geneva during the season - or you can, of course, take your own plane should you have one.

Features

- Aircon
- WiFi Internet
- Winter Heating
- Golf Course Nearby
- Watersports Nearby
- Private Pool

Les Deux Platanes

Region: Cote d'Azur

Sleeps: 14 **Bedrooms:** 7

Location

The village of La Mole has a great local restaurant and an award-winning bakery, and Cogolin is within 5 miles for twice weekly markets. But the beauty of this location must be its proximity to St Tropez and the wonderful, sandy beaches along this stretch of coastline with their vibrant beachside cafes. Golf, tennis, horse riding and go-karting are just some of the activities you might enjoy, along with a diversity of entertainment ranging from children's fun fairs to polo matches.

Tasteful French décor and traditional features combine with modern amenities to create a luxurious holiday home. What better way to enjoy this tranquil setting than to dine al fresco on the terrace under the dappled shade of two beautiful Plane trees.

The village of La Mole has a great local restaurant and an award-winning bakery, and Cogolin is within 5 miles for twice weekly markets. But the beauty of this location must be its proximity to St Tropez and the wonderful, sandy beaches along this stretch of coastline with their vibrant beachside cafes. Golf, tennis, horse riding and go-karting are just some of the activities you might enjoy, along with a diversity of entertainment ranging from children's fun fairs to polo matches.

TOWN/VILLAGE

- La Mole 2km
- Cogolin 8km
- St Tropez 18km
- Ste Maxime 13km

AIRPORT

- La Mole private airfield 3km
- Toulon/Hyeres 35km
- Nice 130km

SHOP/RESTAURANT

- Local restaurant | Bakery La Mole 2km
- Markets Cogolin 8km



Les Deux Platanes

Region: Cote d'Azur

Sleeps: 14 **Bedrooms:** 7

BEACH

- Rayol-Canadel-sur-Mer 12km
- La Croix Valmer | Cavalaire-sur-Mer 20km
- Pampelonne 23km

ACTIVITY

- Tennis 2km
- Horse riding locally
- Golf 18km

ATTRACTIONS

- Mediterranean Gardens at Rayol-Canadel 12km
- Castle Ruins at Grimaud | Monastere de la Verne 15km
- Le Club 55, Pampelonne Beach 23km

Les Deux Platanes

Region: Cote d'Azur

Sleeps: 14 **Bedrooms:** 7

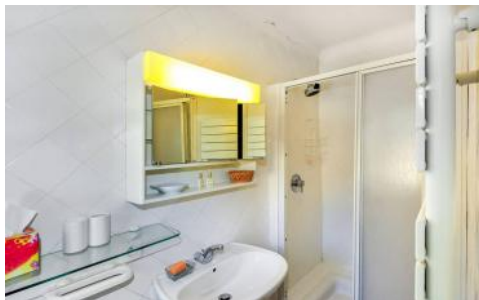
Photos



Les Deux Platanes

Region: Cote d'Azur

Sleeps: 14 Bedrooms: 7



Les Deux Platanes

Region: Cote d'Azur

Sleeps: 14 **Bedrooms:** 7

