

Chateau Cebenna

Region: Languedoc

Sleeps: 20 **Bedrooms:** 11



Overview

Set around a large and luxurious pool, this chateau will make an ideal venue for a large group of friends or family. The foothills of the Cevennes embrace this chateau, located as it is in the northern part of the Languedoc. Stunning views and unlimited walking opportunities. Superb kitchen in keeping with the rest of the chateau.

Description

The foothills of the Cevennes positively embrace this stone chateau in the Languedoc. Sitting at the top of the 19th century tower with a 360 degree view, you'll feel like the king or queen of the forest below. The reception halls and yoga/seminar room make this a clever choice for a company retreat or family reunion. The wide, wonderful private pool is the centrepiece of outdoor life at this holiday chateau. No less stunning are the mountain views from the dining terrace. The 11 bedrooms are simply furnished. The kitchen is a special treat, beautifully refurbished but well in keeping with the old stone ceiling above. Tucked on the edge of the Cevennes National Park, there are unlimited holiday adventures to experience from this holiday chateau. The nearest town (Banne) is a 25-minute walk away. Don't forget to visit the caves and grottoes of La Cocalière.

The main house offers a rustic elegance and comfort on a grand scale including three reception rooms, a yoga/seminar hall, two fully-equipped kitchens, 11 double bedrooms (9 doubles and two twins) and 5 bathrooms and WC's. Gym and fitness room.

Outside are dining terraces, and a 21 metre private, secure, heated, child-safe swimming pool. Dine out on the terrace overlooking your own private valley or climb the tower and marvel at the 360 degree view. The chateau was once owned by Mai Zetterling, the famous Swedish actress and film director.

NB: Flying of drones not allowed.

Chateau Cebenna

Region: Languedoc

Sleeps: 20 **Bedrooms:** 11

Layout

The main house offers a rustic elegance and comfort on a grand scale including three reception rooms, a yoga/seminar hall, two fully-equipped kitchens, 11 double bedrooms (9 doubles and two twins) and 5 bathrooms and WC's.

Outside are a dining terrace, and a 21m private, secure, heated, child-safe swimming pool. Dine out on the terrace overlooking your own private valley or climb the tower and marvel at the 360 degree view.

Ground floor bedroom and bathroom.

More Info

Loads of outdoor activities to see and do in the area.

Small, well-behaved dogs allowed.

No smoking on the property.

Close to the Ardèche river, fantastic for kayaking and river bathing.

Weddings, stag/hen parties and other celebrations are not permitted.

NB: Flying of drones not allowed.

Features

- WiFi Internet
- Satellite TV
- Easy Walk to Shops
- Heated Pool
- Golf Course Nearby
- Private Pool

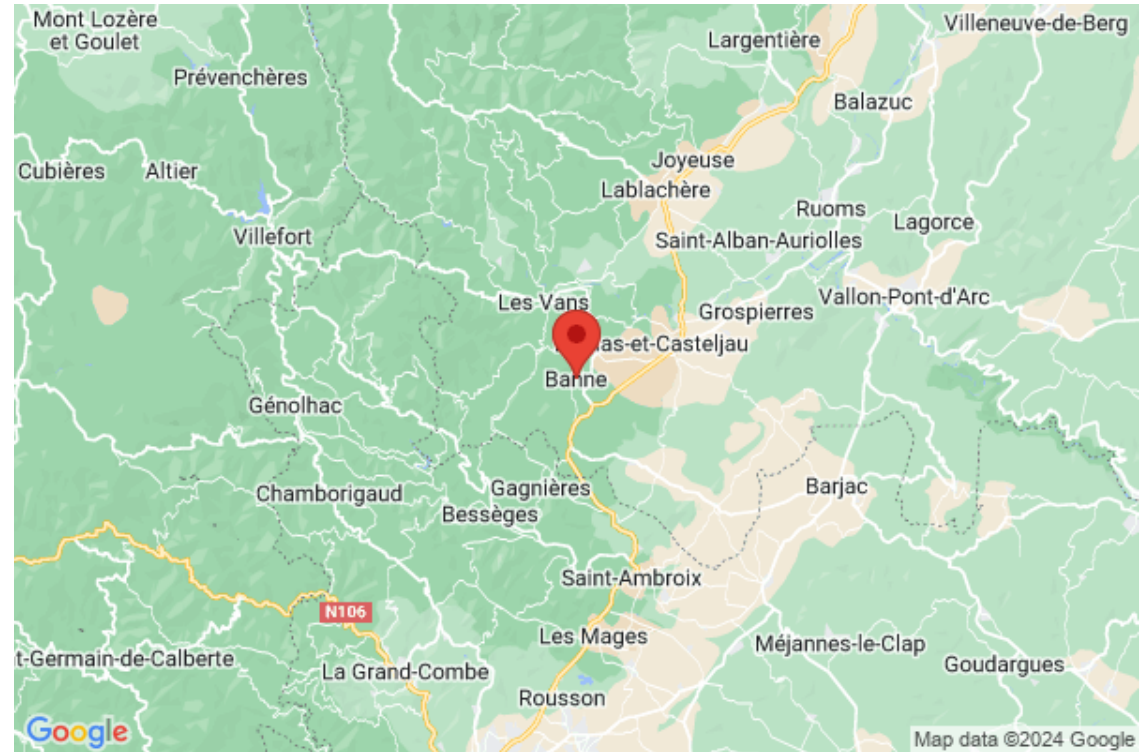
Chateau Cebenna

Region: Languedoc

Sleeps: 20 **Bedrooms:** 11

Location

Loads of outdoor activities to see and do in the area.
25 minute walk or 10 minute drive to nearest village.
About 1.25 hours from Nimes airport.

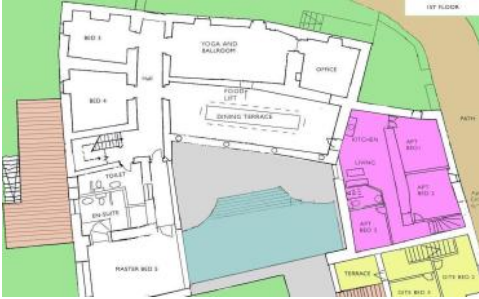


Chateau Cebenna

Region: Languedoc

Sleeps: 20 Bedrooms: 11

Photos



Chateau Cebenna

Region: Languedoc

Sleeps: 20 Bedrooms: 11



Chateau Cebenna

Region: Languedoc

Sleeps: 20 Bedrooms: 11



Chateau Cebenna

Region: Languedoc

Sleeps: 20 **Bedrooms:** 11

