

Chateau St Martiale

Region: Languedoc

Sleeps: 22 **Bedrooms:** 11 **Bathrooms:** 10



Overview

Nestled in the Garonne river valley, at the footstep of the Pyrenees mountains, this French Chateau offers a unique lifestyle experience in one of the most beautiful regions of France.

Built between 1515 and 1525, the property has been fully renovated and offers modern, luxurious facilities in an untouched historical environment. You will enjoy 40 hectares of tree plantations, breathtaking views, a heated swimming pool, plenty of leisure options and unforgettable gastronomy. Particularly suited to weddings, events, seminars and activity holidays. Can be rented per night.

Description

The Chateau Saint Martial is a beautifully restored castle from the Renaissance period. Located 45 minutes away from Toulouse International Airport, on the banks of the Garonne river, with the Pyrénées at close range.

The Chateau is surrounded by historical rural buildings and beautiful woods. Available on an exclusive basis for weddings, cycling trips, vacations and seminars.

Nestled in the Garonne river valley, at the footstep of the Pyrenees mountains, this French Chateau offers a unique lifestyle experience in one of the most beautiful regions of France.

The Chateau's history dates back to the early XVIth century when the Montpezat family, the Lords of Tajan, abandoned their medieval fortress to build the Renaissance chateau on the river banks in order to control the trade on the Garonne river ... and enjoy life. Shortly after the Revolution, the Prince of Berghes married the daughter of the new owner and decided to make the Chateau de Saint-Martory their summer residence. Architect Ruprich Robert, a fellow of Viollet le Duc, was hired to modernize the building and turned it into a major example of Gothic Revival. The property subsequently changed hands several times before being acquired by the father of the present owner in the early 1990s.

The property of Chateau de Saint-Martory now extends over 40 hectares of woodland, bordered by the Garonne river with spectacular views of the nearby Pyrénées mountains. The ancient cereal fields were converted into a tree plantation twenty years ago and trails are now open in the forest of oaks, pines, sycamores and ash trees.

Seven gorgeous suites are available at the Chateau. They have been decorated over time through years of searching in antique shops or auctions; each one is therefore unique, with its history and style. Modern and contemporary art slowly made their way into the Chateau in perfect harmony with old master paintings and classic furniture. Today, the mix of influences is one of a kind, reflecting the owner's various tastes. Three additional guest rooms are available at the farmhouse located right across the lawn and a last room at the gatehouse at the entrance of the castle.

SWIMMING POOL

The chateau's heated swimming pool (16m x 6m) is open from May until October and is the ideal place to enjoy those precious and rare moments of "farniente".

The pool is situated inside a fenced (walled) parcel, about 50 meters away from the chateau's tower.

Chateau St Martiale

Region: Languedoc

Sleeps: 22 **Bedrooms:** 11 **Bathrooms:** 10

Inside that parcel lies our orchard. You will enjoy tasting our organic berries, cherries, plums, apples, pears, apricots, figs and more from June until September.

Next to the pool, an old greenhouse was converted into a very convenient pool-house, equipped with a functional kitchen and a toilet. Barbecuing by the pool is a must. It will bring joy and laughter to your group along with those traditional, « manly » comments on the best ways to light a fire ...

The pool area is the vibrant heart of the property during the summer days, but also in spring and parts of the autumn. And it is a beautiful setting for a Sunday brunch, following a wedding.

FIVE ELEGANT LIVING SPACES - Wifi throughout the property. There are 2 Satellite TV's within the property.

The living areas include two dining rooms, a living room, a fully functional office/business centre and a billiard/games room.

The historical Guard's Room (Salle des Gardes) has merely changed over the past five centuries. Initially, a room where the castle's personnel cooked and guards came seeking some comfort by its massive fireplace, it has become the primary dining room and remains the true heart of the Chateau.

The Formal (Yellow) Dining Room is a very elegant place for an exclusive Gala dinner. It can also be converted into a conference room with a capacity of 30 to 40 participants.

The Red Living Room is a perfect example of XIXth century Gothic Revival. The massive chimney was redone at the time, based on an existing model from Chateau de Blois in the Loire Valley. The addition of wooden panelling by the Architect Ruprich Robert gives a very warm feeling to this « salon » which is often used for drinks/aperitif before dinner.

The Office, formerly a chapel, is located on the ground floor of the main tower. It is a quiet space for work, communications and reading. It offers reliable, high-speed wi-fi access and a printer, along with a widescreen TV with hundreds of channels available.

Located on the chateau's top floor, the Billiard Room is the perfect place to enjoy a glass of Armagnac after dinner. It is also the chateau's screening room: its large television set has access to major international channels through satellite connection, and guests enjoy a large choice of DVDs.

SEVEN GORGEOUS SUITES AT THE CHATEAU (see FACILITIES for more info). All with heating. One with air-

Chateau St Martiale

Region: Languedoc

Sleeps: 22 **Bedrooms:** 11 **Bathrooms:** 10

conditioning.

The historical rooms have been decorated over a ten-year time frame by the current owner and are unique in style, offering the cosy feeling and charm that have made the reputation of Chateau de Saint-Martory. The Cathedral suite, however, is “outrageously” modern as you will see from the photos. Created in 2008, it offers a unique view of the chateau’s roof structure (namely its original oak wood beams), 5-meter high ceilings, and has been decorated with contemporary art, a design bed (designed by the owner) and 1950’s and 1960’s Brazilian furniture.

All the bathrooms, except the Cathedral’s, have large retro bathtubs. Six of the bedrooms offer queen or king size while one of them offers two spacious single beds.

Accommodation at the nineteenth-century farmhouse

In addition to the chateau’s seven luxurious suites, we can also host additional guests at the farmhouse located just across the lawn, one hundred meters away. Three additional rooms and two bathrooms are available in this building dating back to the mid nineteenth century, bringing the total capacity to 20 adults plus as many children as you want.

The farmhouse rooms are also where we host Bed & Breakfast clients in the winter months.

Chateau St Martiale

Region: Languedoc

Sleeps: 22 **Bedrooms:** 11 **Bathrooms:** 10

Layout

Seven gorgeous suites are available at the Chateau. They have been decorated over time through years of searching in antique shops or auctions; each one is therefore unique, with its history and style. Modern and contemporary art slowly made their way into the Chateau in perfect harmony with old master paintings and classic furniture. Today, the mix of influences is one of a kind, reflecting the owner's various tastes.

Three additional guest rooms are available at the farmhouse located right across the lawn.

THE BEDROOMS:

The Royal Suite:

This suite was that of the owner until recently. Facing East and South, with views of the lawns, farmhouse and tree plantations, it is extremely sunny. Its bathroom with the green couch is unique.

King size bed.

The Ancestor's Suite:

Decorated with many portraits of family members, this suite is in the main tower and offers beautiful views of the lawns and tree plantation, facing South.

Queen size bed + a single bed in a separate corner/dressing room.

The Bishop's Suite:

An amazing and humongous suite that once hosted a bishop friend of the family. It faces North and East and overlooks the Garonne river that you can hear running calmly below in your sleep.

Two large single beds.

The Umbrian Suite:

More Info

Not wheelchair accessible.

The Chateau is normally rented out as a whole, guaranteeing exclusivity for your group. And our offerings are always custom-tailored, making Chateau de Saint-Martory one of the most spectacular luxury chateau rentals in Europe.

The chateau is easy to access, a quick 45-minute drive from Toulouse International airport with several daily connections to all major European cities. The property can accommodate 22 adults in 11 bedrooms, seven of which are at the chateau, three at the farmhouse across the lawn and one last room, the gatehouse, at the entrance of the castle. We also offer extra beds for kids in reasonable numbers.

The unique combination of elegant living spaces and gorgeous historical suites offers the backdrop of the unforgettable holidays you always dreamed of, lifestyle at its best!

500 YEARS AND COUNTING

The History of the Chateau de Saint Martory dates back to the beginning of the XVth century when the Montpezat family, lords of Saint Martory, decided to abandon their medieval fortress, which stood on a cliff overlooking the entire Garonne valley and settle near the riverbed to control commercial traffic and ... enjoy life!

The Chateau's architecture is a perfect example of early French Renaissance and offers many similarities with the chateaux of the Loire Valley, although it preceded many of them. Construction began in 1515 and ended supposedly

Features

- Heatable Pool
- Golf Course Nearby
- Private Pool

Chateau St Martiale

Region: Languedoc

Sleeps: 22 **Bedrooms:** 11 **Bathrooms:** 10

On the second floor, facing East and South, with views of the lawns, farmhouse and tree plantations, its unique table dating back from 17th century Northern Italy gives its name to the suite.

King size bed.

Laura's Suite:

Decorated with a beautiful collection of paintings from a very famous local artist. Located inside the main tower, it offers South exposure with views of the lawn, trees plantations, pool area and the Pyrénées.

Queen size bed + a single bed in a separate corner/dressing room.

The Cathedral Suite:

Named for its stunning 15-foot high ceilings showing the beams of the rooftop structure, it has been decorated with 1950's and 1960's designer furniture and contemporary works of art. Located above Suite 3 it offers amazing views of the Garonne river and the village of Saint-Martory.

King size bed.

The Billiard suite:

Located near the games room, on the very last floor of the chateau, this room is sunny all year round, with great views of the property as a whole and the Pyrénées in the backdrop.

King size bed + a single bed in separate corner/dressing room.

ACCOMMODATION AT THE NINETEENTH-CENTURY FARMHOUSE:

Noa's Room:

Looking onto the courtyard of the farmhouse this is our kids' room.

Shares a bathroom with Virginia's Room.

between 1520 and 1525.

Several years after the French revolution, around 1850, the Prince of Berghes (from Northern France) married the daughter of the then-owner and decided to renovate the chateau to transform it into a summer residence. The architect in charge of the works was Victor Ruprich Robert, a fellow of Viollet Le Duc, the first architect in France who undertook the renovation of medieval and Renaissance buildings, and whose major accomplishments include the renovation of the Carcassonne fortress, the Cathedral of Saint-Denis near Paris and the Basilica Saint Sernin in Toulouse.

The interior layout of the chateau was transformed significantly during the renovation, in particular through the addition of wooden panelling, which represented a "modern view" of "gothic style" in those days. Modern comfort was also added with, for example, the creation of separate bathrooms on each floor.

Subsequently, the chateau changed hands numerous times until it was acquired by the family of the current owner in the early 1990's and fully renovated starting in 1998.

CARING EXCLUSIVELY ABOUT YOU

The Chateau is generally rented out as a whole and our guests always have different expectations. Since we started renting out the property, almost 10 years ago, we have always tailored services to the visitor's needs in order to provide the best possible experience.

This attention to details enables us to be a unique destination regardless of the purpose of your stay (e.g. vacations, executive retreats, weddings, photo shoots,

Chateau St Martiale

Region: Languedoc

Sleeps: 22 **Bedrooms:** 11 **Bathrooms:** 10

Twin beds.

etc.)

Virginia's Room:

Great views of the lawn and chateau.

Shares a bathroom with Noa's Room.

Queen size bed.

If you simply want to relax in a historical and comfortable environment, the basic staff will include cleaning personnel, gardeners and onsite concierge/security. Extra staff will be hired according to your requirements. A butler for example?

Gabriella's Suite:

With beautiful views of the lawns, chateau and tree plantation.

Queen size bed.

If you like food and wine, we will help you experience the best of our region's gastronomy with the help of local chefs who will cook for you at the chateau, and you will visit wine as well as Armagnac producers who have been our partners for years.

If you like adventurous sports, we can help you organize everything from paragliding to hot air balloon rides ... to heli-skiing in the Pyrenees, taking off from the very lawn of the chateau. Cycling is a big allure in the Pyrenees and St Martial is the perfect launch site for challenging mountain tours or more gentle rides in rolling countryside. Special off-season package trips are available.

AN IDYLLIC VENUE FOR YOUR WEDDING

What could be more romantic than marrying the love of your life in a French chateau? We have been hosting destination weddings since 2015 and hope to be a favoured wedding venue for the coming years as it is really an amazing moment to witness, even from behind the scenes.

Large weddings can be organized in Saint-Martory as long as a professional wedding planner is involved. The bride and groom are free to choose the professional they prefer but we will be happy to indicate one that we trust and is fluent in English.

Chateau St Martiale

Region: Languedoc

Sleeps: 22 **Bedrooms:** 11 **Bathrooms:** 10

The ceremony itself can be held anywhere inside the property but we also have a Catholic Church within walking distance for those who want to marry religiously.

In order to welcome wedding dinners and parties, we created, back in 2015, a beautiful reception room at the farmhouse of the chateau, 100 yards away from the castle itself. The room can host approximately 150 people and is equipped with sufficient tables and chairs for the event.

The courtyard of the farmhouse is also a beautiful setting for a true lifestyle destination wedding (if weather permits). The square courtyard has an open barn where the dance floor can be set up and one aisle of the buildings has been converted into facilities. Last but not least, a separate space inside the farmhouse's courtyard has been retrofitted to allow caterers to work efficiently.

Getting married at St Martial is easy in terms of logistics as the Toulouse airport is very well connected. We will help with local accommodation and transportation as required. And we will also be pleased to help you organize activities ahead of the event, for example, a wine tasting or a white water rafting experience.

We charge a specific wedding fee on top of normal lodging rates (please refer to Rates section). The wedding fee includes the rental of the reception room, facilities, tables and chairs, and the right to welcome any number of guests on the grounds for two occasions over a weekend period: Either Friday night and Saturday (all day & night), or Saturday (all day & night) and a lunch on Sunday. We will provide the required staff to ensure safety and privacy during the two events. Additional events can be organized on demand with the payment of a limited extra fee per person.

Chateau St Martiale

Region: Languedoc

Sleeps: 22 **Bedrooms:** 11 **Bathrooms:** 10

You can see below a photo gallery with a selection of great pictures from recent weddings. Please also visit our Facebook page for images of past weddings at the Chateau de Saint-Martory.

Details regarding the Farmhouse

The farmhouse of the Chateau Saint Martial is located 100 meters away from the Chateau. It was built around 1850, during the previous restoration of the property. It is a typical South-West France farm, with a central courtyard surrounded by stone buildings which were used back in time for the agricultural, breeding and storage needs of the property, as well as the host the farmers and Chateau servants.

The farmhouse is the heart of the property when it comes to events. Its courtyard has already been used for concerts, seminars, antique sales and now, of course, weddings.

We can provide pictures of the farmhouse rooms on demand.

CORPORATE EVENTS

Thanks to its estate including the 16th-century castle, its 4 working rooms, the reception hall of the farm, the Chateau de Saint-Martory is a modular place that can accommodate groups ranging from 10 to more than 150 people.

We will propose you the ideal place to succeed your event. Overnight stays or simple workshop days, estimates are made on request according to the number of participants, the duration of your event and your wishes.

The rooms can be equipped according to your requests and needs, and you can get together inside but also enjoy

Chateau St Martiale

Region: Languedoc

Sleeps: 22 **Bedrooms:** 11 **Bathrooms:** 10

the nature surrounding the Chateau de Saint-Martory.

Beyond its prestige, the Chateau Saint Martial offers absolute comfort and real services to welcome you:

- Free WIFI
 - Adapted audiovisual systems: overhead projector, flipchart, speaker, microphone
 - Quality furniture
 - Natural brightness in each space
 - Heating in the reception rooms
 - Numerous activities and activities are possible on site as well as free parking for about 50 cars.
- Contact us for more information.

Chateau St Martiale

Region: Languedoc

Sleeps: 22 **Bedrooms:** 11 **Bathrooms:** 10

Location

5 minutes walk to bar and restaurant.

SPORTS IN SAINT-MARTORY

Going out on nice walks, fishing and hunting are possible on the property, depending on the season.

Trails:

The chateau's 40 hectares property is covered with tree plantations (American red oak trees, European oak trees, maple trees and many more varieties) and borders the Garonne river for a few kilometres. Several trails have been opened to enjoy nice walks on the property regardless of the season.

Fishing:

Trout fishing season is open generally from May until September. The Garonne river is a very good spot for fly fishing. The local fishermen's association is run by Fife, the owner of Cafe de la Place in St Martory and a local figure. He will be happy to provide permits and also give recommendations regarding the best spots in and around St Martory.

Hunting:

Hunting season is open generally from September until January / February. The property is a famous spot for deer and boar, as well as hare and pheasant.

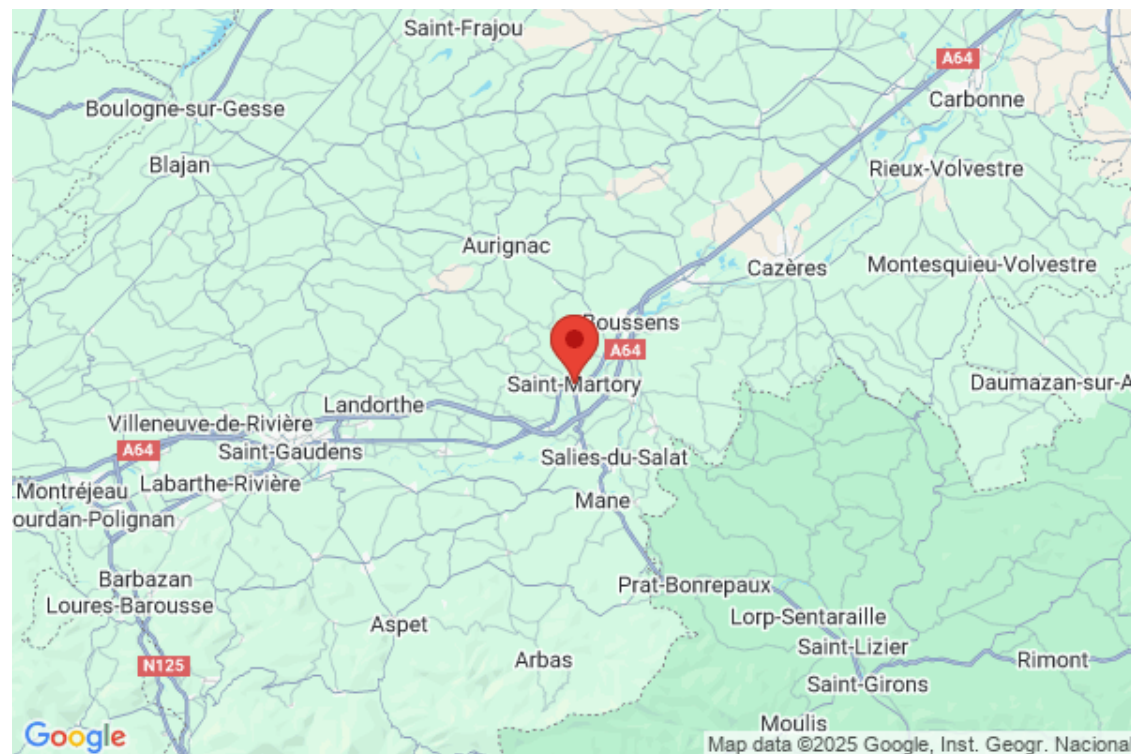
Football (soccer):

The village has a full-size field that can be used for free, 5 minutes walking from the chateau.

Tennis:

Two hard tennis courts are available at no cost in the village. They are situated next to the football stadium.

NEARBY



Chateau St Martiale

Region: Languedoc

Sleeps: 22 **Bedrooms:** 11 **Bathrooms:** 10

Countless sports options are available within a one-hour drive range, from golf to horseback riding, cycling famous Tour de France stages and the full range of summer and winter mountain sports.

Golf:

The closest course is located 5 minutes away in Salies du Salat (6 holes) and another course is located 20 minutes away in Montrejeau (9+6 holes).

A nice course with beautiful mountain views is 40 minutes away at La Bastide de Serou, roughly halfway between St Girons and Foix.

Another nice course in Lannemezan, 40 minutes away by A64 highway.

In Gers, a beautiful course at Château Barbet 50 minutes away.

The oldest golf course in Continental Europe is situated in Pau, roughly 1 hour 15 minutes south (using A64 highway).

Finally, numerous golf course options exist around Toulouse itself.

Horseback riding:

The closest and best riding centre nearby is located in St Medard, 10 minutes away. There is also an excellent centre in Prat Bonrepaux, 15 minutes away.

Cycling:

Saint-Martory is located nearby several legendary Tour de France Pyrenees hills, including Portet d'Aspet (which can be seen from the property),

Tourmalet, Luz Saint Sauveur and Luz Ardiden etc. For bicycle fans no further comments are necessary!

Mountain water sports:

Rafting, canoeing and other water mountain sports can all be organized with Antignac Rafting, 45 minutes away from the chateau.

Trekking:

There are countless options in nearby Hautes Pyrenees and Ariège departments. Google search will provide in numerous options of clubs and suggested itineraries depending on your level.

Ski:

The closest ski resort is 45 minutes away from the chateau at Le Mourtis.

Roughly one hour away lies an excellent ski resort just above the thermal city

Chateau St Martiale

Region: Languedoc

Sleeps: 22 **Bedrooms:** 11 **Bathrooms:** 10

of Bagnères de Luchon.

In the nearby Hautes Pyrenees department, several first class resorts (Luz Ardiden, Hatacam, Cauterets, Saint Lary Soulan, Peyragudes, Grand Tourmalet) are available.

Finally, on the Spanish side of the Pyrenees lies the resort where the King of Spain goes every winter: Baquera.

And, for the adventurous ones, we can organize helicopter pickup at the chateau and virgin powder skiing on the Spanish side of the Pyrénées.

Rugby:

The south-west of France and Toulouse, in particular, is the home of French Rugby. Don't hesitate to go to town, watch a game of the Stade Toulousain. It is always worth it!

CULTURE

Mighty Cathars:

Strategically located on the road to St Jacques of Compostelle, the region is charged with history. The chateaux Cathares, Saint Bertrand de Comminges abbatial, Foix castle and the numerous landmarks of Toulouse, to quote only a few, offer visitors a fantastic opportunity to discover French history and art.

Visits we highly recommend:

- A day tour of Toulouse's main museums (including Les Abattoirs, the contemporary art venue).
- The Toulouse-Lautrec museum in Albi.
- The nearby Aurignac village and Palais des Evêques of "Allan".
- A full-day tour using the small roads including the Foix Citadelle, followed by one of the Chateaux Cathares (e.g. Montségur) ending in Medieval marvel "Carcassonne" and back by the highway.
- Abbaye de Bonnefont (interesting site located 3 km away from the château).
- A walk around the St Lizier village close to St Girons.
- The magnificent abbatial of St Bertrand de Comminges (45 minutes away towards the Spanish Val d'Aran border).

WE TAKE GASTRONOMY SERIOUSLY

Chateau St Martiale

Region: Languedoc

Sleeps: 22 **Bedrooms:** 11 **Bathrooms:** 10

The South-West is a unique region in terms of good food, wine and spirits and we take gastronomy very seriously at Saint-Martory.

In addition to selecting the best possible staff for lunches and dinners to be served at the property, we can help organize unforgettable culinary day trips. We can guarantee that you will be well-received by the best producers of the region, including our Armagnac cousins in Lannepax!

We also have a very interesting selection of French wines in our cellar. Some of them are available for guests and the cave list changes every year depending on latest additions and the ageing process of existing bottles. We will be glad to organize a wine tasting with the help of a local sommelier or even a special all-cheese dinner with a variety of wines and a blasting Armagnac tasting to finish it all.

Day-trip suggestion:

Close-by Gers is a beautiful region, with a very scenic countryside, and offers visitors an opportunity to discover (or re-discover) foie gras, Armagnac and the excellent wines of Madiran. As part of a day trip (minibus can be arranged) I recommend visiting:

The great Madiran wine region. Stop by at the best local producer, the man who put South-West wines on the map about 20 years ago, Monsieur Alain Brumont. You will be welcomed with a tour of the vineyard and “chai”, as well as a wine tasting. Lunch at the vineyard is possible and highly recommended.

The cities of Mirande, Auch, Vic Fezensac and/or Eauze.

During this road trip, stop at Lannepax (close to Vic Fezensac) and say hello to the Delord, my “Gascon cousins” who have been producing Armagnac since the 19th century. They will show you around the “chai” ... The phone number of the Armagnac Delord distillery is 05 62 06 36 07; ask for Jérôme. Visitors willing to drive a little further away will be able to taste the gastronomy of the Pays Basque or Perigord, as well as the grapes of Minervois, Corbières, Mas Amiel, Cahors, etc.

Restaurants:

Here are some local restaurants that you will certainly enjoy:

Chateau St Martiale

Region: Languedoc

Sleeps: 22 **Bedrooms:** 11 **Bathrooms:** 10

- Castet in Martres Tolosane (10 km); try the “magret en croûte de Sel”; 05 61 98 80 20; ask for Gilles or Françoise.
- Hotel Eychene in St. Girons (25 km); try the “brochette gourmande” of duck hearts and foie gras; 05 61 04 04 50; ask for Mr. and Ms. Bordeaux.
- Le Carré de l’Ange (20kms) in St Lizier, in a magnificent setting: 05 61 65 65 65
- Hostellerie des Cèdres in Villeneuve de Rivière (15 km); 05 61 89 36 00; ask for Emmanuel and say you are staying at the château.
- In Toulouse, a must try: Michel Sarran; 05 61 12 32 32.
- Near Toulouse a new “two-star” Michelin: L’Amphitryon in Colomiers; 05 61 15 55 55.

GAMBLING & PAMPERING

Here is some additional information regarding gambling, pampering and more. If you have any questions regarding activities that have not been mentioned on this site, please contact us and we will be glad to help.

Gambling:

The nearby village of Salies du Salat has a casino, which opens late afternoon until 2 AM.

And, the newest Casino of the luxury Barrière Group is in Toulouse.

Don’t forget to bring your IDs if you want to gamble!

Pampering:

Nearby Salies-du-Salat also has an excellent thermal/spa centre.

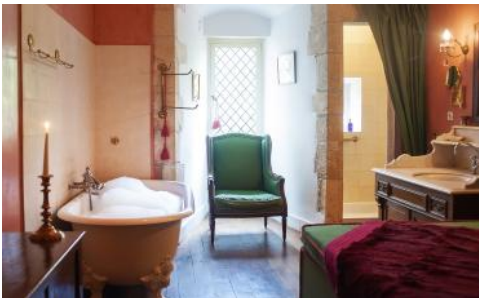
The same goes for Luchon, 40 minutes away, which has been famous since the 19th century.

Chateau St Martiale

Region: Languedoc

Sleeps: 22 Bedrooms: 11 Bathrooms: 10

Photos



Chateau St Martiale

Region: Languedoc

Sleeps: 22 Bedrooms: 11 Bathrooms: 10



Chateau St Martiale

Region: Languedoc

Sleeps: 22 Bedrooms: 11 Bathrooms: 10



Chateau St Martiale

Region: Languedoc

Sleeps: 22 Bedrooms: 11 Bathrooms: 10



Chateau St Martiale

Region: Languedoc

Sleeps: 22 Bedrooms: 11 Bathrooms: 10

