

# Bougainvillea

**Region:** | Vence

**Sleeps:** 6 **Bedrooms:** 3 **Bathrooms:** 3

---



## Overview

Superb villa set in beautiful gardens with panoramic views. Large heated pool (15m x 8m) and shady terraces. Calm and secluded, but not at all isolated - only 5 minutes from lovely village of Vence. Part air conditioning. Three bedrooms all with en suite bathrooms. Two bedrooms on ground floor. Children over 10 years only.

## Description

Bougainvillea is a striking stone villa set in beautiful gardens with panoramic views across the Baie des Anges and Alpes-Maritimes. This beautiful, Provencal family villa in the hills above Vence has air-conditioning, a heated pool and wonderful covered terraces with beautiful sea views; everything you could possibly want for a calm and relaxing holiday on the French Riviera.

Furnished in a timeless, classic style, it is private but not isolated; you are only a 5 minute drive from the lovely town of Vence offering shady squares, tree-lined avenues, cafes and restaurants.

Nearby St Paul de Vence is renowned for the narrow cobbled streets and art galleries of the Cercle des Artistes. For an altogether more modern experience head to Cagnes-sur-Mer and the Polygone Riviera Centre where you can marvel at the avant-garde architecture and perhaps take in a French film. The nearest beach is at Villeneuve-Loubet, where you will also find a modern Marina lined with small shops and restaurants. Further afield, Antibes, Cannes, Cap Ferrat and the Cap d'Ail near Monaco each offer a different taste of the French Riviera, from medieval ramparts and narrow cobbled streets to art-deco buildings and wide, palm tree-lined avenues. All enjoy a unique place along the Azur blue Mediterranean seashore and all offer a taste of French joie-de-vivre.

Grounds:

2500 square metres of enclosed, terraced grounds with panoramic views (not suitable for children under 10 years). Mature shrubs and trees, lawn to front and rear. Covered dining terrace with dining for 10, summer kitchen (2 barbecues, fridge). Large 15m x 8m pool (depth 0.50m - 2m, Roman step entry), poolside covered terrace with outdoor living. Garage for 1 car and parking for 2 further cars.

# Bougainvillea

**Region:** | Vence

**Sleeps:** 6 **Bedrooms:** 3 **Bathrooms:** 3

---

## Layout

A spacious 250 square metres villa

Ground floor:

Open-plan, L-shaped living/dining room, (TV,DVD), open fireplace, 3 French doors to garden and covered terrace with outdoor dining for 10, lovely sea views.

Fully fitted kitchen with door to garden and entrance.

Double bedroom (1.40m), air-conditioning, overlooking pool, French door to terrace with sea view, ensuite shower room, WC.

Twin bedroom, fan, French door to garden, ensuite shower room, WC.

First floor:

Double/twin bedroom (1.60m), air-conditioning, door to balcony, sea view, ensuite dressing room and bathroom, WC.

## More Info

Please note: Children over 10 years only.

Grounds:

2500 square metres of enclosed, terraced grounds with panoramic views (not suitable for children under 10 years).

Mature shrubs and trees, lawn to front and rear. Covered dining terrace with dining for 10, summer kitchen (2 barbecues, fridge). Large 15m x 8m pool (depth 0.50m - 2m, Roman step entry), poolside covered terrace with outdoor living. Garage for 1 car and parking for 2 further cars.

## Features

# Bougainvillea

**Region:** | Vence

**Sleeps:** 6 **Bedrooms:** 3 **Bathrooms:** 3

## Location

### TOWNS

Vence 5 mins

St-Paul-de-Vence 15 mins

Grasse 40 mins

Nice 45 mins

Antibes 45 mins

### BEACHES

Villeneuve-Loubet 20 mins

Cagnes-sur-Mer 30 mins

Nice 35 mins

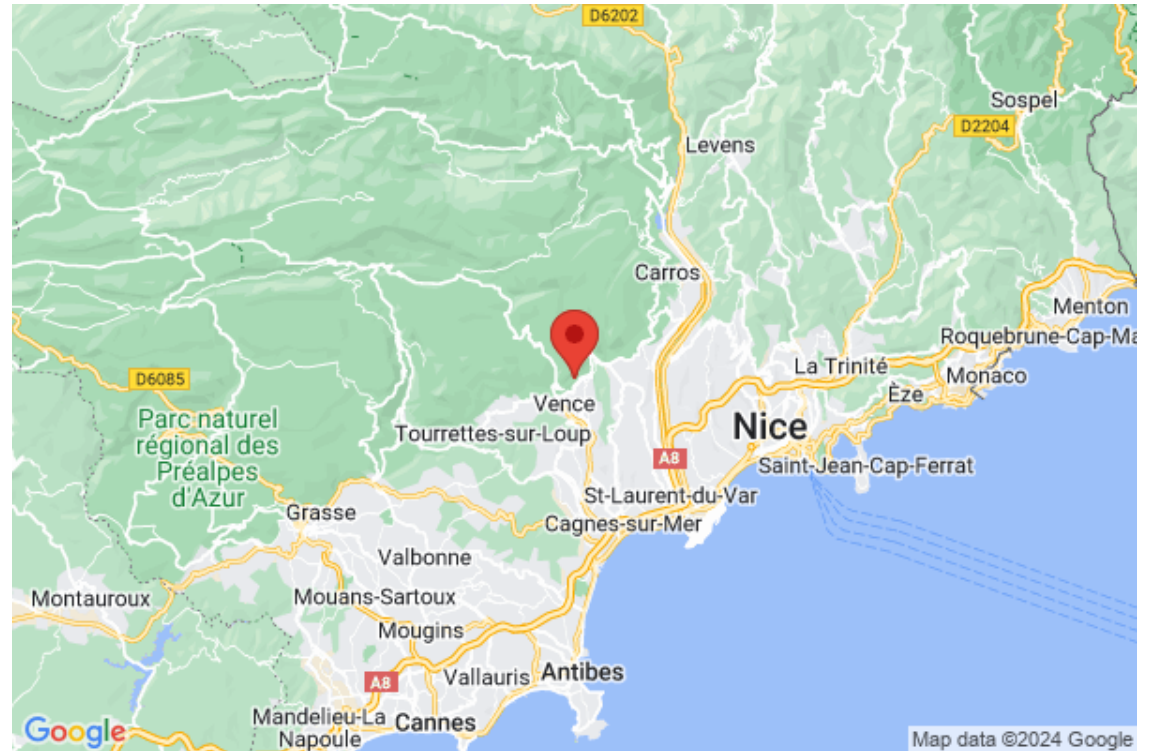
Antibes 40 mins

### AIRPORTS

Nice 30 mins

Toulon 2 Hrs

Marseille 2 Hrs 30 mins



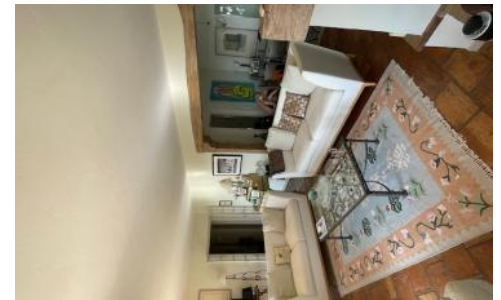


# Bougainvillea

Region: | Vence

Sleeps: 6 Bedrooms: 3 Bathrooms: 3

## Photos



# Bougainvillea

Region: | Vence

Sleeps: 6 Bedrooms: 3 Bathrooms: 3

