

Villa Ellema

Region: Paros

Sleeps: 12 **Bedrooms:** 6 **Bathrooms:** 6



Overview

A stylish architectural delight with stunning sea views.
Simply bliss.

Description

A stylish architectural delight with stunning sea views. Simply bliss.

This property would be ideal for a group of friends or extended family looking for their own privacy but wishing to holiday together. The property is essentially comprised of two houses (each sleeping four persons) and two smaller guesthouses (each sleeping two).

The style is distinctly modern whilst blended with the charismatic Cycladic architecture, contrasting against the surrounding landscape to create a wholly impressive villa. The complex includes an impressive outdoor area with a beautiful decked swimming pool, sunset facing lounge and outdoor dining area. There are seaviews as far as the neighbouring island of Antiparos.

There is a housekeeper who lives on site in an independent room close to the main house (maintaining discretion at all times). Daily housekeeping services are offered and on request will undertake shopping trips, laundry and other services payable locally.

Villa Ellema is located on the west side of the island, close to the port that links Paros to Antiparos, near the bay of Agia Irini (600 m to the nearest beach). Paros airport 6 kms.

Accommodation

All bedrooms have air conditioning.

House 1

Double bedroom with open plan ensuite bathroom (A/C)

Twin bedroom with open plan ensuite bathroom (A/C)

Full equipped kitchen, spacious living room (TV), Inner courtyard-outside sitting and dining areas.

Guests WC.

Guest House 1

Double bedroom with ensuite bathroom (A/C)

Kitchenette, living room

House 2

Double bedroom with open plan ensuite bathroom (A/C)

Twin bedroom with ensuite bathroom, one single bed - suitable for children (A/C)

Villa Ellema

Region: Paros

Sleeps: 12 **Bedrooms:** 6 **Bathrooms:** 6

Fully equipped kitchen, spacious living room. Inner courtyard-outside sitting and dining areas

Guest House 2

Double bedroom with en-suite bathroom (A/C)

Kitchenette, living room

Grounds:

Private swimming pool. BBQ. Outdoor shower. Dining facilities.

Villa Ellema

Region: Paros

Sleeps: 12 **Bedrooms:** 6 **Bathrooms:** 6

Layout

ACCOMMODATION
(450 m2)

MAIN HOUSE

Ground Level:

Kitchen, living and dining area (TV, Playstation, iPod dock)

Bedroom 1: Double bedroom, en suite shower room, door to pool terrace, mountain view.

Bedroom 2: Double bed, en suite shower room, door to pool terrace, sea view.

Guest WC.

Upper Level:

Bedroom 3: Master bedroom with double bed and en suite shower room, door to shaded terrace, sea view.

Bedroom 4: Twin bedroom, en suite shower room, sea view.

Bedroom 5: Twin bedroom, door to balcony, sea view.
2 shower rooms.

GUEST HOUSE:

(50 m2)

Studio with access from the pool terrace, close to the tennis court.

Bedroom 6: Double bedroom, en suite shower room, A/C, day bed that could be used as an extra bed, door to shared terrace.

Dressing room and small kitchenette.

STAFF HOUSE

Used by the living in staff of this villa.

More Info

Features

- Aircon
- WiFi Internet
- Easy Walk to Beach
- Sea View
- Private Pool

Villa Ellema

Region: Paros

Sleeps: 12 **Bedrooms:** 6 **Bathrooms:** 6

Grounds:

Spacious private grounds comprising several terraces with private swimming pool (Roman steps), sunbathing area furnished with sun loungers, several open and covered terraces with al fresco dining and lounge facilities, BBQ, tennis court, table tennis. Parking.

Villa Ellema

Region: Paros

Sleeps: 12 **Bedrooms:** 6 **Bathrooms:** 6

Location



DISTANCES

Nearest Airport: Heraklion International Airport
60 km.

Nearest Port: Agios Nikolaos Port 10 km.

Nearest Town/ Village: Agios Nikolaos 8. 5 km,
Elounda 4 km.

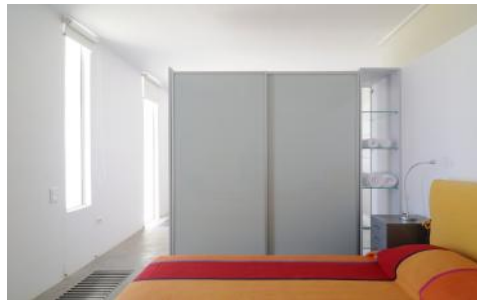
Nearest Beach: 1. 5 km.

Villa Ellema

Region: Paros

Sleeps: 12 Bedrooms: 6 Bathrooms: 6

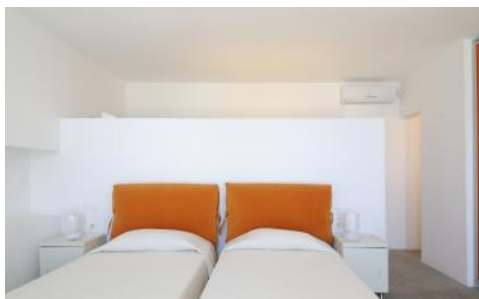
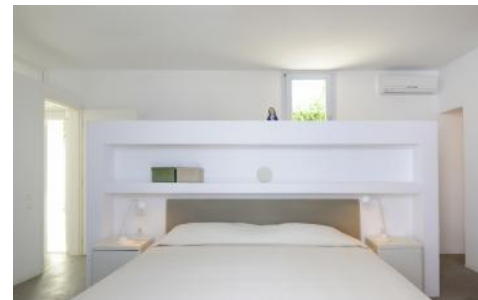
Photos



Villa Ellema

Region: Paros

Sleeps: 12 Bedrooms: 6 Bathrooms: 6



Villa Ellema

Region: Paros

Sleeps: 12 Bedrooms: 6 Bathrooms: 6

