

Can Nala

Region: Ibiza

Sleeps: 10 **Bedrooms:** 5 **Bathrooms:** 5



Overview

From its hilltop position in Cap Martinet, surrounded by a woodland nature reserve and just a short drive from Ibiza town and its airport, this lovely family villa with salt-water pool affords breathtaking panoramic views across the Mediterranean sea to the island of Formentera.

Description

This delightful family villa for 10 with salt-water pool is surrounded by woodland and sits on a hilltop in Cap Martinet, commanding breathtaking views across the Mediterranean to Formentera.

This truly amazing view is visible from almost every room in the house. Sturdy stone wall and a private automatic gate provide the highest level of privacy and security. The beautifully paved drive gives easy access to parking for 4 cars.

ACCOMMODATION

Living areas

Also situated on the first floor are the wonderfully designed, large, open plan lounge and dining areas which open out onto the terrace. The living areas have polished cement floors and are bright and beautifully furnished with modern fixtures and fittings. The lounge area boasts generous seating, a large Smart TV with Sky TV and Apple TV, while the spacious dining area features a large dining table easily accommodating 10 guests. There is an alarm system, high speed internet and air conditioning throughout the house. The kitchen is fully equipped.

Bedrooms and bathrooms

Bedroom 1: Queen size bed, en-suite shower room, air conditioning, doors to terrace with sea view.

Bedroom 2: Queen size bed, en-suite shower room, air conditioning, door to terrace with an outdoor shower and sea views.

Bedroom 3: Queen size bed, en-suite shower room, air conditioning, door to terrace with views to Ibiza Old Town.

Bedroom 4: Twin beds, en-suite shower room, air conditioning, views to the forest.

Bedroom 5: On the ground/ pool floor with queen size bed, en-suite shower room, air conditioning, sofa, door to pool area, independent entrance.

Grounds

The 11m x 4m salt water swimming pool, sunbathing area and day bed area are on the ground floor and are fully equipped with sun loungers and parasols; the area is beautifully sculpted and overlooks a woodland nature reserve and the sea. Also on the ground floor, you will find the separate guest bedroom.

For outdoor entertaining, the terrace on the first floor boasts a spacious dining area easily seating 10 guests, a comfortable covered chill-out area with wonderful views and an outdoor plancha.

Can Nala

Region: Ibiza

Sleeps: 10 **Bedrooms:** 5 **Bathrooms:** 5

Layout

ACCOMMODATION

Living areas

Inside, is beautifully furnished and styled with high quality fixtures and fittings, as well as a private gym.

Lounge area has a huge sumptuous sofa, a flat screen Samsung TV + Bose surround system, blue ray DVD player, Spanish and Dutch satellite TV, there are also 2 Bose speakers on the outdoor terrace.

Dining area with table for 8 people.

Modern, fully equipped kitchen.

Bedrooms and bathrooms

MAIN HOUSE

Bedroom 1: (super king size bed - 180cm x 200cm), en-suite bathroom with bath and shower, independent air conditioning system, TV.

Bedroom 2: (super king size bed - 180cm x 200cm), en-suite bathroom with bath and shower, independent air conditioning system, TV.

Bedroom 3: super king size bed - 180cm x 200cm), en-suite shower room, independent air conditioning system, TV.

Bedroom 4: super king size bed - 180cm x 200cm), en-suite shower room, independent air conditioning system, TV.

GUEST HOUSE

Bedroom 5: (super king size bed -180cm x 200cm), independent air conditioning system, flat screen TV, shared bathroom with bedroom 6.

Bedroom 6: (super king size bed - 180cm x 200cm), independent air conditioning system, flat screen TV, shared bathroom with bedroom 5.

Grounds

More Info

Features

- Aircon
- WiFi Internet
- Sea View
- Private Pool

Can Nala

Region: Ibiza

Sleeps: 10 **Bedrooms:** 5 **Bathrooms:** 5

The outdoor areas are spacious and include a 10m x 10m salt-water pool, outdoor terraces comprising ample sunbathing and shaded areas equipped with luxurious high quality sun loungers, comfortable outdoor sofas, chairs, daybed and parasols. There is also a gas barbecue and outdoor dining facilities seating up to 8 people. A large proportion of the property is landscaped and there are vast areas of beautifully maintained lawns and gardens.

Can Nala

Region: Ibiza

Sleeps: 10 **Bedrooms:** 5 **Bathrooms:** 5

Location

DISTANCES

Nearest Airport: Thera International Airport 6.5 km (9 min drive).

Nearest Port: 12 km.

Nearest Town/ Village: Fira Centre 3.5 km (8 min drive).

Nearest Beach: Vourvoulos 500m.



Can Nala

Region: Ibiza

Sleeps: 10 Bedrooms: 5 Bathrooms: 5

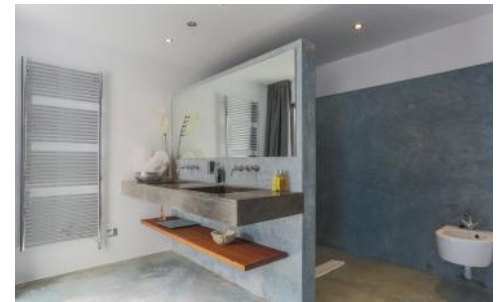
Photos



Can Nala

Region: Ibiza

Sleeps: 10 Bedrooms: 5 Bathrooms: 5



Can Nala

Region: Ibiza

Sleeps: 10 Bedrooms: 5 Bathrooms: 5

