

# Villa Aquadream

**Region:** PORTUGAL

**Sleeps:** 12 **Bedrooms:** 5 **Bathrooms:** 6

---



## Overview

Right at the heart of the Algarvean resort of Vilamoura lies this striking contemporary villa with heatable, salt-water pool and Jacuzzi - a perfect situation within a 10-minute stroll from the marina and the beach ensuring a relaxing holiday for the entire family.

## Description

Vilamoura: A superb location just 10 minutes' stroll from the beach and marina in Vilamoura, for this glamorous contemporary villa with heatable, salt-water pool and Jacuzzi.

The contemporary architecture, the huge double-glazed windows and the open space style kitchen, provide luminosity and the perfect connection with nature and the natural surroundings. All tailor-made furniture is crafted to a very high standard. Guests can find their favourite spot in the landscaped garden with plenty of sunshine and a variety of shaded areas in which to enjoy al fresco dinners or sip refreshing cocktails by the pool or the Jacuzzi. With the safety of guests in mind, the villa is equipped with an alarm system inside and in the garden. Moreover, this property is fully equipped with air conditioning (cold and hot), double glazing, a blackout system in all rooms and solar panels. The 5 rooms are spacious, all with private shower rooms are modern and equipped with air conditioning.

# Villa Aquadream

**Region:** PORTUGAL

**Sleeps:** 12 **Bedrooms:** 5 **Bathrooms:** 6

---

## Layout

### ACCOMMODATION

(411 m2)

#### **Ground floor:**

Entrance hall.

Open plan living area Smart TV, Netflix, sofa, games table, mini-bar equipped with a fridge-freezer, door to covered terrace with outdoor furniture and garden.

Dining area, square table for 8 people.

Kitchen/ breakfast area, ceramic hob, oven, microwave, dishwasher, kettle, toaster, Nespresso coffee machine, combined fridge, hand blender, wine cellar, door to garden.

Guest WC.

Bedroom 1: Double size bed, built-in wardrobe, air conditioning, view and direct access to the pool area, private shower room, WC, hairdryer.

Bedroom 2: Double size bed, built-in wardrobe, air conditioning, view and direct access to the pool area, private shower room, WC, hairdryer.

Bedroom 3: Double size bed, built-in wardrobe, air conditioning, view and direct access to the pool area, private shower room, WC, hairdryer.

#### **Lower ground floor (entrance level):**

Games room, TV, sofa, mini bar/ kitchenette, air conditioning.

Bedroom 4: Twin beds/ double bed, fitted wardrobes, air conditioning, private shower room, WC.

Bedroom 5: Double size bed, fitted wardrobes, air conditioning, private shower room, WC.

Additional bedroom with twin beds (can be joined) available on request for two people, private shower room, WC, air conditioning.

#### **Top floor:**

## More Info

## Features

- Aircon
- WiFi Internet
- Easy Walk to Beach
- Heatable Pool
- Private Pool

# Villa Aquadream

**Region:** PORTUGAL

**Sleeps:** 12 **Bedrooms:** 5 **Bathrooms:** 6

---

Huge rooftop terrace overlooking the pool. 4 sun loungers, armchairs, side table and two suspended swings.

## **Grounds:**

Landscaped gardens with ample lawn areas, mature plants and hedgerows. Large salt-water, heatable swimming pool (Roman steps, monitor water quality), poolside shower, 8 sun loungers. Covered patio with a set of sofas, dining table for 10 people and charcoal BBQ. Jacuzzi, waterfall. Central alarm system inside, electric shutters and solar panels. 3 uncovered parking spaces available within the lot and accessed by electric gates.

# Villa Aquadream

**Region:** PORTUGAL

**Sleeps:** 12 **Bedrooms:** 5 **Bathrooms:** 6

## Location

### DISTANCES

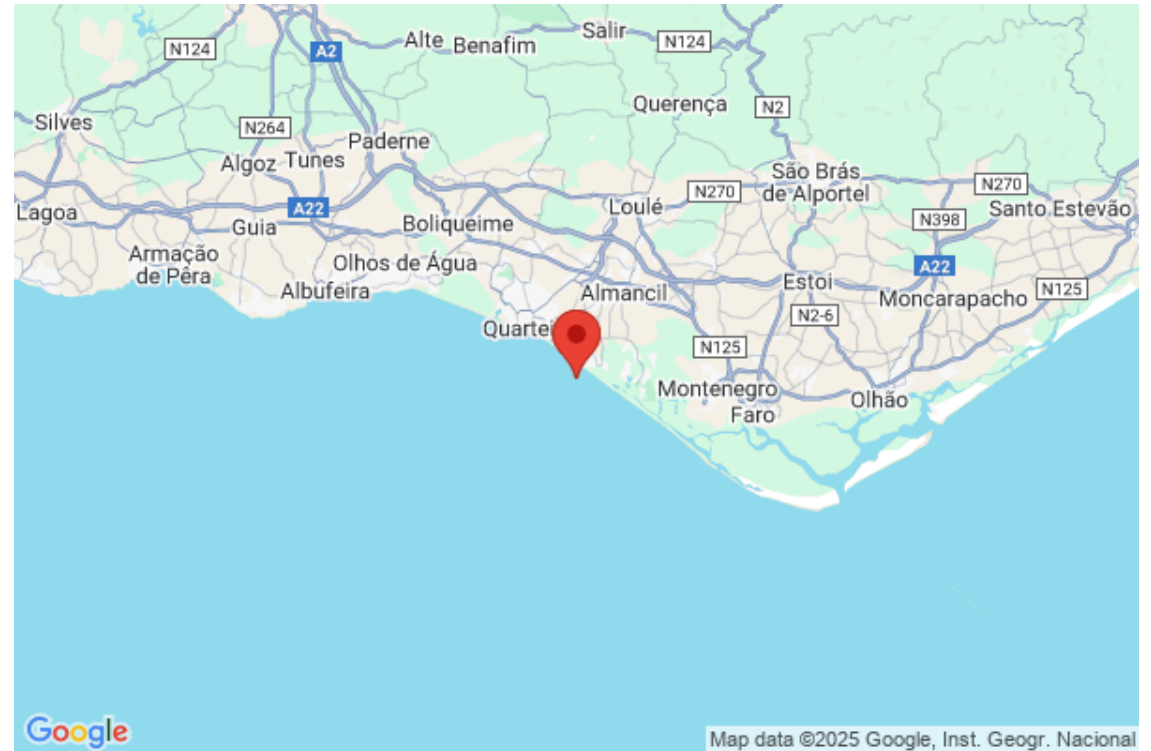
Restaurant: 100 metres.

Supermarket: 300 metres.

Marina and beach: 900 metres.

Airport: 25 km.

Train station: 8 km.



# Villa Aquadream

Region: PORTUGAL

Sleeps: 12 Bedrooms: 5 Bathrooms: 6

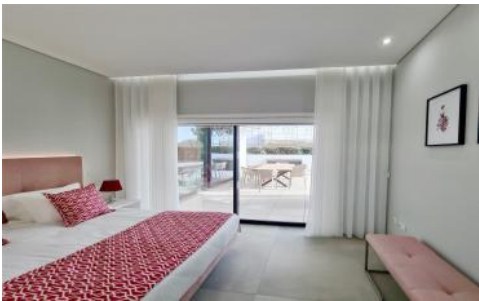
## Photos



# Villa Aquadream

Region: PORTUGAL

Sleeps: 12 Bedrooms: 5 Bathrooms: 6



# Villa Aquadream

Region: PORTUGAL

Sleeps: 12 Bedrooms: 5 Bathrooms: 6

---

