

Floresta Marinha Estate

Region: PORTUGAL

Sleeps: 30 **Bedrooms:** 16 **Bathrooms:** 12



Overview

Set within a 60-acre, unspoilt pine-tree forest, part of Nature Reserve in Comporta, this unique estate welcomes up to 32 guests in 4 modern, single storey villas, each featuring 4 bedrooms and all sharing a communal heatable, salt-water pool and tennis/ paddle court: an ideal solution for large groups on holiday together or multi-generational family celebrations.

Description

Muda, Comporta: A unique opportunity to enjoy Portugal's natural beauty in a Nature Reserve by the splendid sandy beaches of Comporta, south of Lisbon - ideal for up to 32 guests in 4 villas.

This large property belongs to an architect's family and encompasses 4 independent houses, ideal for a group of friends or families. The simplicity and the aesthetics of the houses, the extremely modern and wide interiors merge with the pine forest which is always present in these houses. All villas are spacious and airy and designed for large gatherings. The coast is just 10 minutes' drive away and Lisbon town centre and airport approximately 1 hour away.

Nestled along the coast south of Lisbon lies the idyllic region of Comporta, a hidden gem cherished for its pristine beaches and laid-back atmosphere. Here, azure waters meet soft, golden sands, inviting people to unwind amidst breathtaking natural beauty. Comporta's charm lies in its untouched landscapes where rolling dunes mingle with pine forests, creating a serene backdrop for leisurely strolls and contemplative moments. Quaint fishing villages dot the coastline, offering glimpses into traditional Portuguese life and serving up fresh seafood delicacies. Whether exploring the rugged coastline, indulging in water-sports or simply lounging under the sun, Comporta beckons visitors to savour the unhurried pace of coastal living, making it a haven for those seeking relaxation and rejuvenation.

VILLA I

(Semi-detached)

Shared entrance hall with Villa II.

Very spacious open-plan Living/ Dining areas,

Floresta Marinha Estate

Region: PORTUGAL

Sleeps: 30 **Bedrooms:** 16 **Bathrooms:** 12

double-height ceiling, fireplace, air conditioning, doors to decked terrace and garden, sea and forest views.

Stairs to mezzanine level with Office space.

Fully equipped Kitchen/ breakfast area, glass panels on two sides.

Bedroom 1: Super king-size bed (2m x 2m)/ Twin beds, en suite shower room, door to terrace.

Bedroom 2: Super king-size bed (2m x 2m)/ Twin beds, shared shower room with Bedroom 3, door to terrace.

Bedroom 3: Super king-size bed (2m x 2m)/ Twin beds, shared shower room with Bedroom 2, door to terrace.

Bedroom 4: Master room, super king-size bed (2m x 2m), en suite bathroom, walk-in shower, door to terrace.

Shared shower room between Bedroom 2 & 3.

VILLA II

(Semi-detached)

Shared entrance hall with Villa I.

Very spacious open/plan Living/ Dining areas, double-height ceiling, fireplace, air conditioning, doors to decked terrace and garden, sea and forest views.

Stairs to mezzanine level with Office space.

Fully equipped Kitchen/ breakfast area, glass

Floresta Marinha Estate

Region: PORTUGAL

Sleeps: 30 **Bedrooms:** 16 **Bathrooms:** 12

panels on two sides.

Bedroom 1: Super king-size bed (2m x 2m)/ Twin beds, en suite shower room, door to terrace.

Bedroom 2: Super king-size bed (2m x 2m)/ Twin beds, shared shower room with Bedroom 3, door to terrace.

Bedroom 3: Super king-size bed (2m x 2m)/ Twin beds, shared shower room with Bedroom 2, door to terrace.

Bedroom 4: Master room, super king-size bed (2m x 2m), en suite bathroom, walk-in shower, door to terrace.

Shared shower room between Bedroom 2 & 3.

VILLA III

(Detached)

Very spacious open/plan Living/ Dining areas, double-height ceiling, fireplace, air conditioning, doors to decked terrace and garden, sea and forest views.

Stairs to mezzanine level with Office space.

Fully equipped Kitchen/ breakfast area, glass panels on two sides.

Bedroom 1: Double/ Twin bedroom, en suite shower room, door to terrace.

Bedroom 2: Master Double bedroom, en suite shower room, door to terrace.

Floresta Marinha Estate

Region: PORTUGAL

Sleeps: 30 **Bedrooms:** 16 **Bathrooms:** 12

Bedroom 3: Double/ Twin bedroom, en suite shower room, door to terrace.

Bedroom 4: Double bedroom, en suite shower room, door to terrace.

Guest W. C.

VILLA IV

(Detached)

Large Living/ Dining area, fireplace, doors to terrace, stairs to mezzanine level with Office space.

Fully equipped Kitchen/ breakfast area.

Bedroom 1: Double/ Twin room, en suite shower room, door to terrace.

Bedroom 2: Double/ Twin room, shared shower room with bedroom 3.

Bedroom 3: Double/ Twin room, shared shower room with bedroom 3.

Bedroom 4: Double room, en suite bathroom, shower, door to terrace.

Grounds:

60-acre private, gated domain mostly featuring pine trees and mature shrubs. Private, heatable, salt-water pool

Floresta Marinha Estate

Region: PORTUGAL

Sleeps: 30 **Bedrooms:** 16 **Bathrooms:** 12

(Roman steps) on a decked terrace with sun loungers, outdoor shower. Tennis/paddle court for exclusive use of the guests of the 4 villas. Each villa features decked terraces with al fresco dining facilities and outdoor lounging areas, BBQ. Ample parking.

Floresta Marinha Estate

Region: PORTUGAL

Sleeps: 30 **Bedrooms:** 16 **Bathrooms:** 12

Layout

ACCOMMODATION:

Top level:

Living/ Dining, table for 14 people, 2 large 3-person sofas, 6 easy chairs, underfloor heating, ceiling fan, front aspect balcony with seating and shade, TV with UK channels and Sonos sound system.

Guest Kitchen/ breakfast area for 8, Range cooker, gas hob & electric oven, fridge freezer, drinks fridge, 12 place setting, dishwasher, Nespresso Virtuo & Classic machines, kettle & toaster, underfloor heating, BBQ area (gas, charcoal and pizza oven).

Professional Kitchen, situated separately behind the guest kitchen, electric oven, gas hob, professional dishwasher, fridge freezer, air con, large workspace.

Bedroom 1: Master suite, King-size bed, private courtyard with outside shower & seating area, front aspect balcony with seating and sea view, bathroom with walk-in shower, W. C. , air conditioning, ceiling fan and heating, safe, hairdryer.

Guest W. C.

Large seating and dining area on top terrace (dining for up to 40 people).

More Info

Features

- Aircon
- WiFi Internet
- Heatable Pool
- Golf Course Nearby
- Private Pool

Floresta Marinha Estate

Region: PORTUGAL

Sleeps: 30 **Bedrooms:** 16 **Bathrooms:** 12

Pool level:

Bedroom 1: King-size bed/ Twin beds, en suite bathroom with walk-in shower, W. C. , air conditioning, ceiling fan and heating, safe, hairdryer, front aspect seating area with sea view.

Bedroom 2: King-size bed/ Twin beds, en suite bathroom, with walk-in shower, W. C. , air conditioning, ceiling fan and heating, desk/ dressing table and chair, safe, hairdryer, front aspect seating area with pool and sea view.

Bedroom 3: King-size bed/ Twin beds, bathroom with walk-in shower, W. C. , air conditioning, ceiling fan and heating, desk with chairs & dressing table, safe, hairdryer, front aspect seating area with pool and sea view.

Lower ground floor:

Gym, (Treadmill, Static bike, Multi gym, Free weights, work bench & yoga mats), fully air conditioned. Massage treatment room. Laundry (staff use only). WiFi throughout. Sonos on outside terraces.

Grounds:

Beautiful landscaped gardens, 40 m2 infinity

Floresta Marinha Estate

Region: PORTUGAL

Sleeps: 30 **Bedrooms:** 16 **Bathrooms:** 12

swimming pool (Roman steps), sun terrace with sun loungers. Table tennis.

Covered and open terraces with outdoor lounging and dining areas, magnificent panoramic sea view. Parking for 5 cars.

Floresta Marinha Estate

Region: PORTUGAL

Sleeps: 30 **Bedrooms:** 16 **Bathrooms:** 12

Location

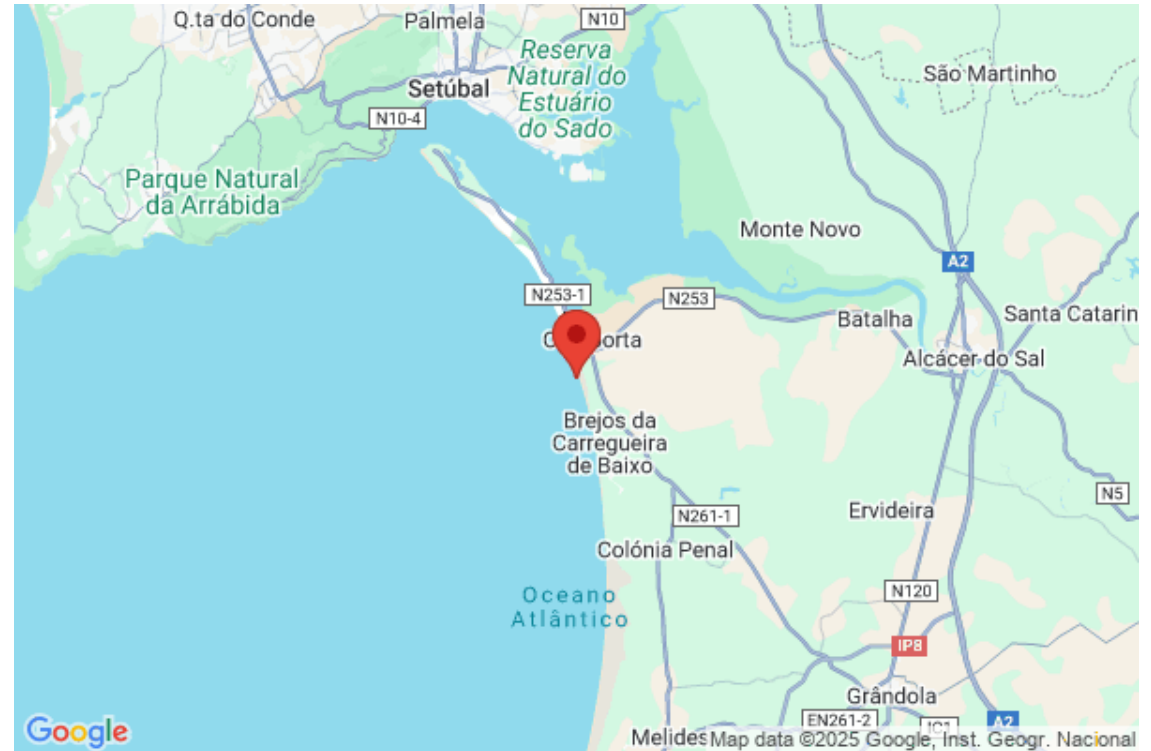
DISTANCES

Avlaki bay (2 tavernas, sailing and water sports): 5 minutes' walk.

Kassiopi (bars, nightlife, shopping): 7 minutes' drive.

San Stefanos (tavernas on the beach, cocktail bars): 10 minutes' drive.

Corfu Old town: 1 hour and 15 minutes' drive.

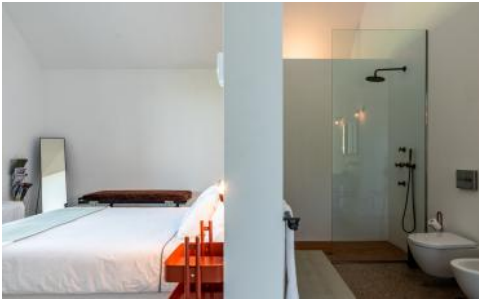


Floresta Marinha Estate

Region: PORTUGAL

Sleeps: 30 Bedrooms: 16 Bathrooms: 12

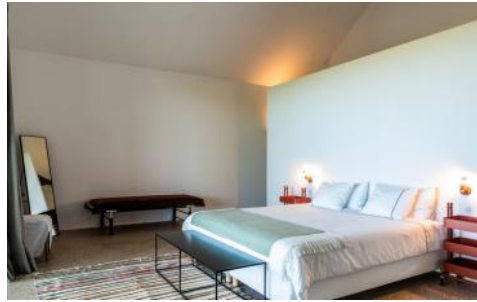
Photos



Floresta Marinha Estate

Region: PORTUGAL

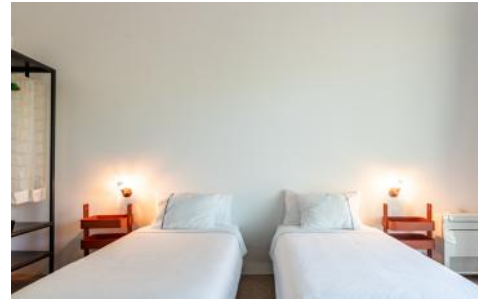
Sleeps: 30 Bedrooms: 16 Bathrooms: 12



Floresta Marinha Estate

Region: PORTUGAL

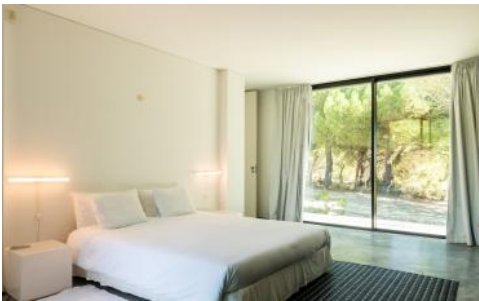
Sleeps: 30 Bedrooms: 16 Bathrooms: 12



Floresta Marinha Estate

Region: PORTUGAL

Sleeps: 30 Bedrooms: 16 Bathrooms: 12



Floresta Marinha Estate

Region: PORTUGAL

Sleeps: 30 Bedrooms: 16 Bathrooms: 12

